

High value use-cases:

- Change data capture
- ETL offload
- Messaging applications
- Secure edge analytics

Fixed low cost PoC for \$85k includes:

- Installation
- 10-node implementation
- 10x 1-year enterprise support licenses

Apache Pulsar

Is the core data manager in the Soft Streams architecture. Pulsar offers a simple consume/produce streaming with next generation features including

- Dynamic, simple scaling
- End-to-End encryption
- Unlimited data durability
- Functions in streams

 PULSAR

1

Trino

Pulsar SQL . Query streams with a simple, familiar interface.

Query data in-place without the need for complex, slow, error prone copy operations. Resulting in 80% wall clock time savings on query execution.

Query to Exabyte scale.

 trino

2

 Apache Superset™

3

Apache Superset


Modern data exploration and visualization platform compatible with Trino queries.

Simple no-code viz builder or state of the art SQL IDE.


Connect with Apache Pulsar and visualize at petabyte scale.

3 Ways to Interface

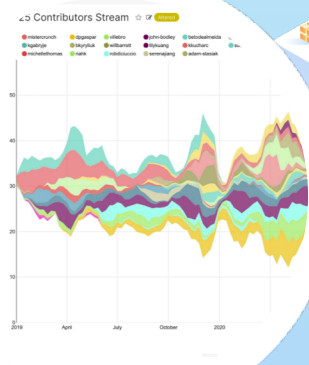
Accessing data is flexible

 PULSAR Per message access with Pulsar APIs

 trino `SELECT * FROM TABLE WHERE A=B+C`
SQL interface from Trino

 Apache Superset™ Graphical no-code / low code interface with Apache Superset

4



Rapid Streams 
Compatible

<https://SigmaXai.com>

info@sigmax.ai